

## Wilderness in Development

To the right and left of the Wilderness Trail you can experience the exciting process of the developing wilderness in the "Development National Park", which was founded in 2004 and is still very young.

Protected areas in this category have 30 years to leave at least three quarters of their area to its own devices. Then, they meet the international criteria of a national park.

Already, more than half of the area satisfies the national park motto "Let nature be nature". Nature is developing according to its very own laws there.



Nationalpark  
Eifel



Landesbetrieb Natur und Forst  
Nationalpark Eifel



### Wilderness Trail

- 1st section: from Hofen National Park Gate to Einruhr, approx. 24 km
- 1st Easy variant: approx. 23.6 km
- 2nd section: from Einruhr to Gemünd, approx. 20 km
- 3rd section: from Gemünd to Heimbach, approx. 22.4 km
- 4th section: from Heimbach to Zerkall National Park Information Point, approx. 17.8 km



**Zerkall National Park Centre**  
Major fully accessible interactive exhibition "Wildnis/jeune" (Dreams of wilderness / Wilderness spaces)



**National Park Gate (free of charge)**  
Tourist information and small exhibition about the Eifel National Park



**National Park Information Point (free of charge)**



**Eifel National Park hosts**  
For hotels, see tourist guide for the Eifel National Park adventure region, or [www.nationalpark-eifel.de/gaestgeber](http://www.nationalpark-eifel.de/gaestgeber)



**Zerkall railway station**  
Train travel in the direction of Düren or Heimbach, [www.nationalpark-eifel.de](http://www.nationalpark-eifel.de)

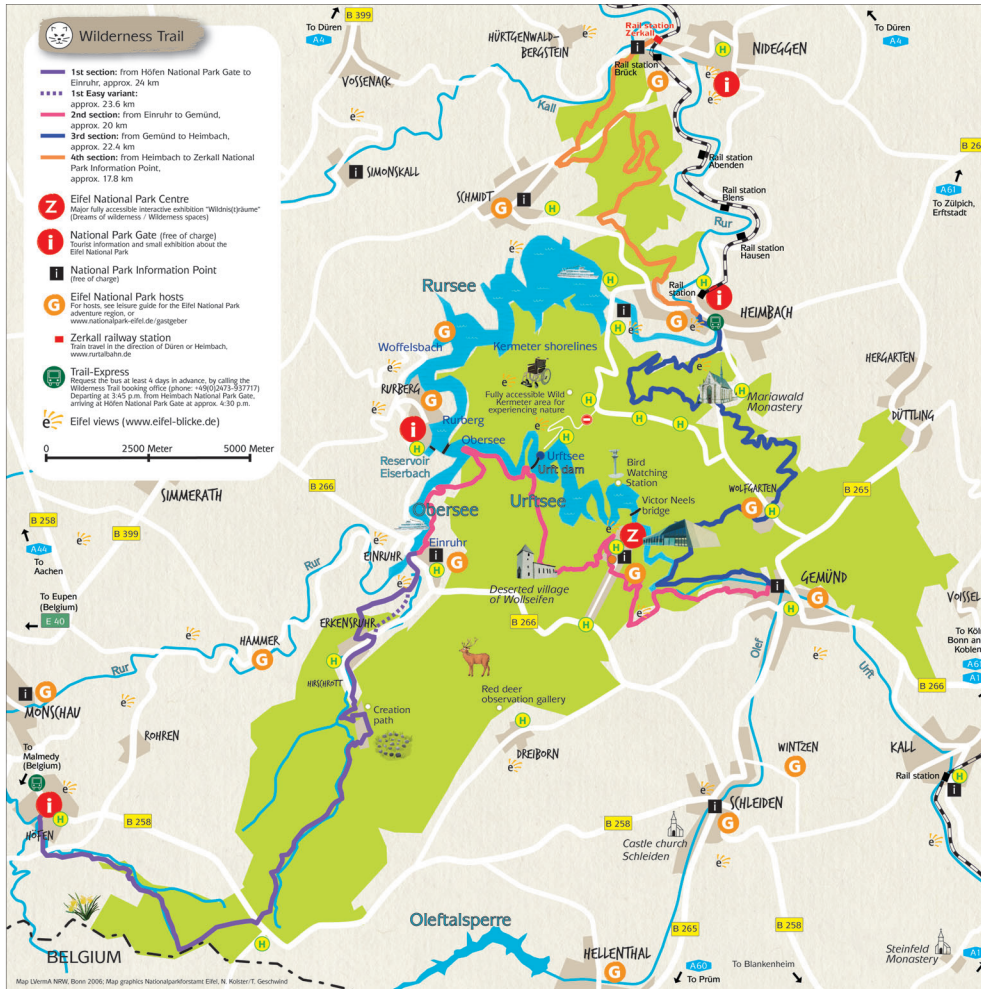


**Trail-Express**  
Request the bus at least 4 days in advance, by calling the Wilderness Trail booking office (phone: +49(0)2473-837717) or by email: [booking@wilderness-trail.de](mailto:booking@wilderness-trail.de)



**Eifel views** ([www.eifel-blicke.de](http://www.eifel-blicke.de))

0 2500 Meter 5000 Meter



Wald  
Wasser  
Wildnis

## Wilderness Trail



Across the Eifel National  
Park in four days

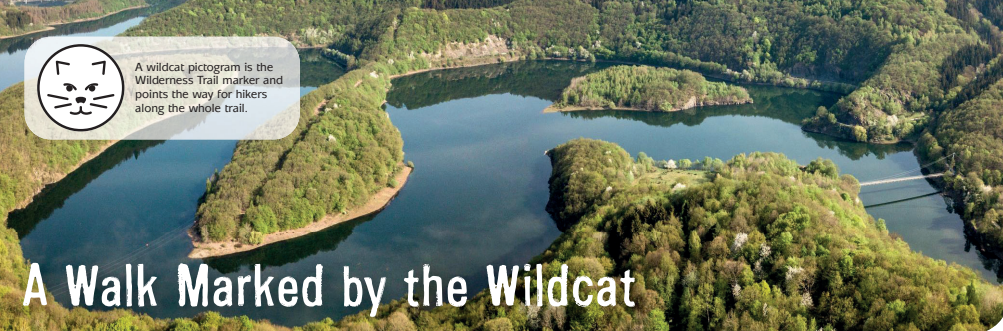


Right across - Right in the middle





A wildcat pictogram is the Wilderness Trail marker and points the way for hikers along the whole trail.



# A Walk Marked by the Wildcat

Impressive views of the first-lake panorama are your reward for some steep sections of the trail.

## THE TRAIL

The peace and space of the Eifel National Park await: sometimes on narrow paths, sometimes on well-developed hiking paths, the 84 kilometre Wilderness Trail winds its way from south to north through the Eifel National Park. Four daily stages of between 18 and 24

kilometres invite you to explore the wild beauty and diversity of the nature conservation area through thick woods, past fallen trees, rushing streams and meadows with extensive panoramic views. With a climb totalling 1,787 metres and a descent of more than 2,200 metres, this walk between 625 and 173 metres above sea level is certainly demanding!

Combine adventure with downtime: museums, swimming pools, friendly villages, as well as attractions such as the Eifel National Park Centre with the major "Space for Wilderness/Wilderness Dreams"

Exhibition make you want to explore the region in addition to the four-day hike.



Up-to-date information and event tips can be found along the trail in the National Park Gates. These information cabins provide a tourist service and small national park exhibitions. Entry is free.

## THE PACKAGE

You can walk the four stages of the Wilderness Trail individually or combine them - however you want. Or you can book the Wilderness Trail as a service package. The basic package from EUR 269 per person includes:

- Three nights' accommodation in a double room with breakfast
- Return from the destination of Zerkall to the starting point of Monschau-Höfen on the Rurtalbahn train and the "Trail Express" (this can also be used if you plan your trip individually)
- 1x Hiking Guide "The Wilderness Trail in the Eifel National Park" (in German)
- 1x "Eifel National Park" hiking map
- "Wilderness Trail" badge, hiking pass and certificate when you have successfully crossed the national park
- Travel security note
- Car park ticket for the walkers' car park in Monschau-Höfen

You will preferably stay with certified national park hosts. These facilities meet specific quality and environmental criteria and provide you with detailed information about the Eifel National Park - including insider tips for your visit to this region of discovery!

**Bookable Extras:** single room, accompaniment of a dog, luggage transportation, central accommodation with transfer to the start and end points of the stages or additional "lazy days". Make the Wilderness Trail into a very special experience by being accompanied by a certified national park forest guide on one or more stages.

All of the information on the Wilderness Trail and a booking form can be found at [www.nationalpark-eifel.de/en/wilderness-trail](http://www.nationalpark-eifel.de/en/wilderness-trail)

## Contact

Wilderness Trail booking office  
E-Mail: [info@wildnis-trail.de](mailto:info@wildnis-trail.de)  
phone: +49(0)2473-937722



## PUBLISHING DETAILS

**Published by**  
Nationalparkverwaltung Eifel  
Urftestr. 34  
53937 Schleiden-Gernüld  
[www.nationalpark-eifel.de](http://www.nationalpark-eifel.de)

As of May 2024

Responsible according to German press law  
Michael Lammertz  
Head of Communications and Experiencing Nature  
Editor M. Menninghaus, A. Kockelmann  
**Map** T. Geschwind  
**Picture credits** D. Ketz (title, drone shots, hikers),  
H. Grabe (wildcat), M. Müller (meadow),  
Dr. A. Pardey (butterfly), M. Menninghaus (signpost)  
**Design** T. Geschwind, Visual Communication  
**Printing** Druckerei Mainz, Aachen

